



# SANE

Sustainable All-considerate Numinous Evolutionary

[sanefuture.io](https://sanefuture.io)

# The Next Frontier of Economy

03	Context	15	Technology
04	Market overview	17	Business Model
06	REFI explained	18	Use Case
08	Challenges	20	Investment Opportunity
09	Solution	22	Market Strategy
10	Overview	23	Ecosystem Landscape
11	Application	24	Roadmap
12	Strategy	25	Teams



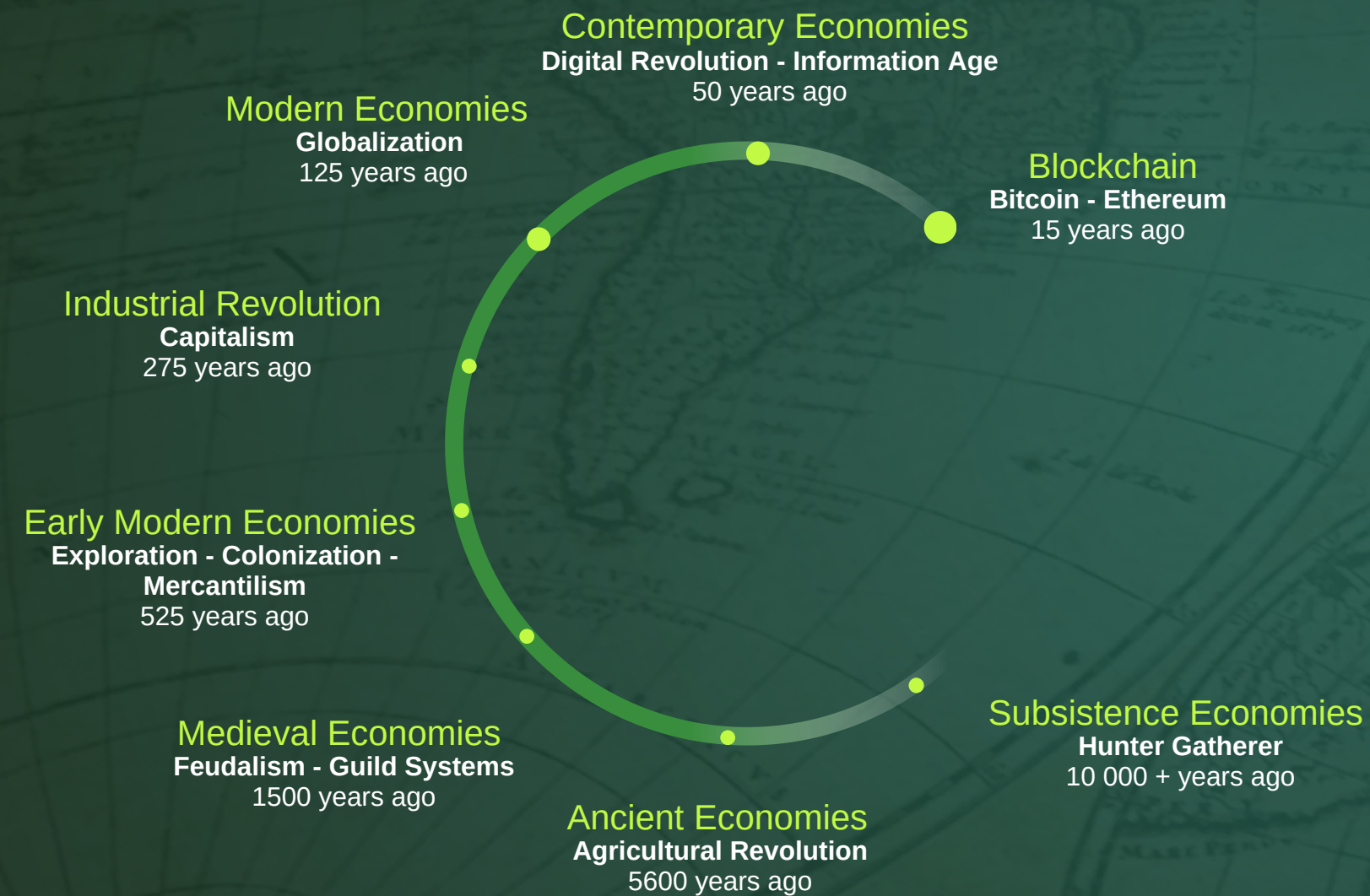
# The Big Picture.

## Meta-systemic solution for a world in transformation.

- With systemic challenges increasing, there is an urgent need to pilot new systems that can scale and replicate both virtually and physically.
- The most foundational human system is our economic system. It underlies all other systems.
- Our current economic system does not assign value to natural capital assets; its embedded growth obligations are incompatible with planetary boundaries.
- The incentive structures of our current economic frame are ultimately self-terminating.
- SANE is a whole-system approach, a new virtual & physical network and an economy that chart a potential path towards a human-nature interface with the aim of returning earth to a balanced state, while increasing health to human systems.



# Economy underlies Societal Transformation – What is the Next Step?



# Increasing Circles of Care

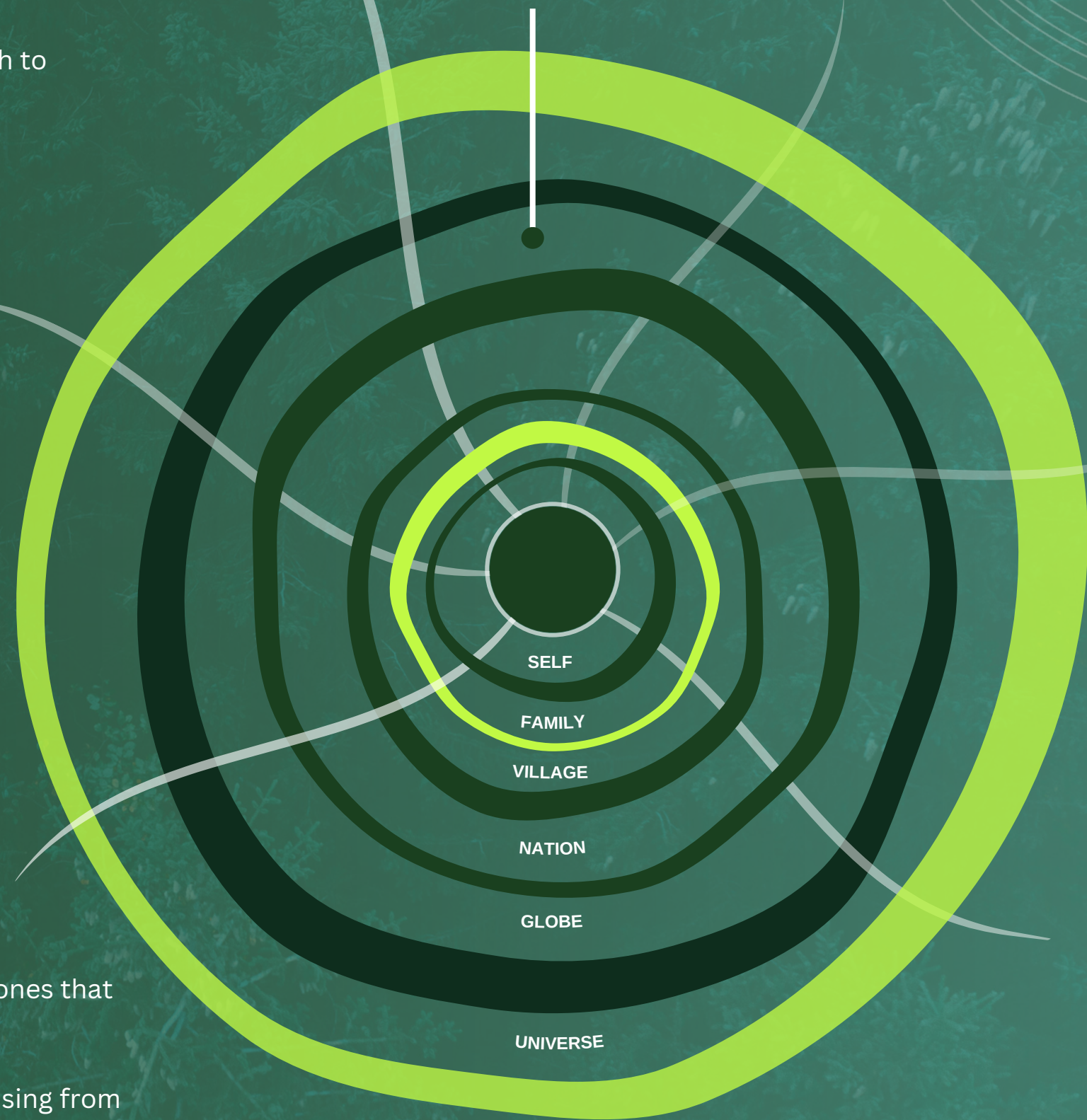
As we grow in consciousness, our circle of care & compassion grows from self through to all-considerate:



Increasing care and compassion for the Whole give rise to new aspects of economy - ones that give earth and human wellness a voice.

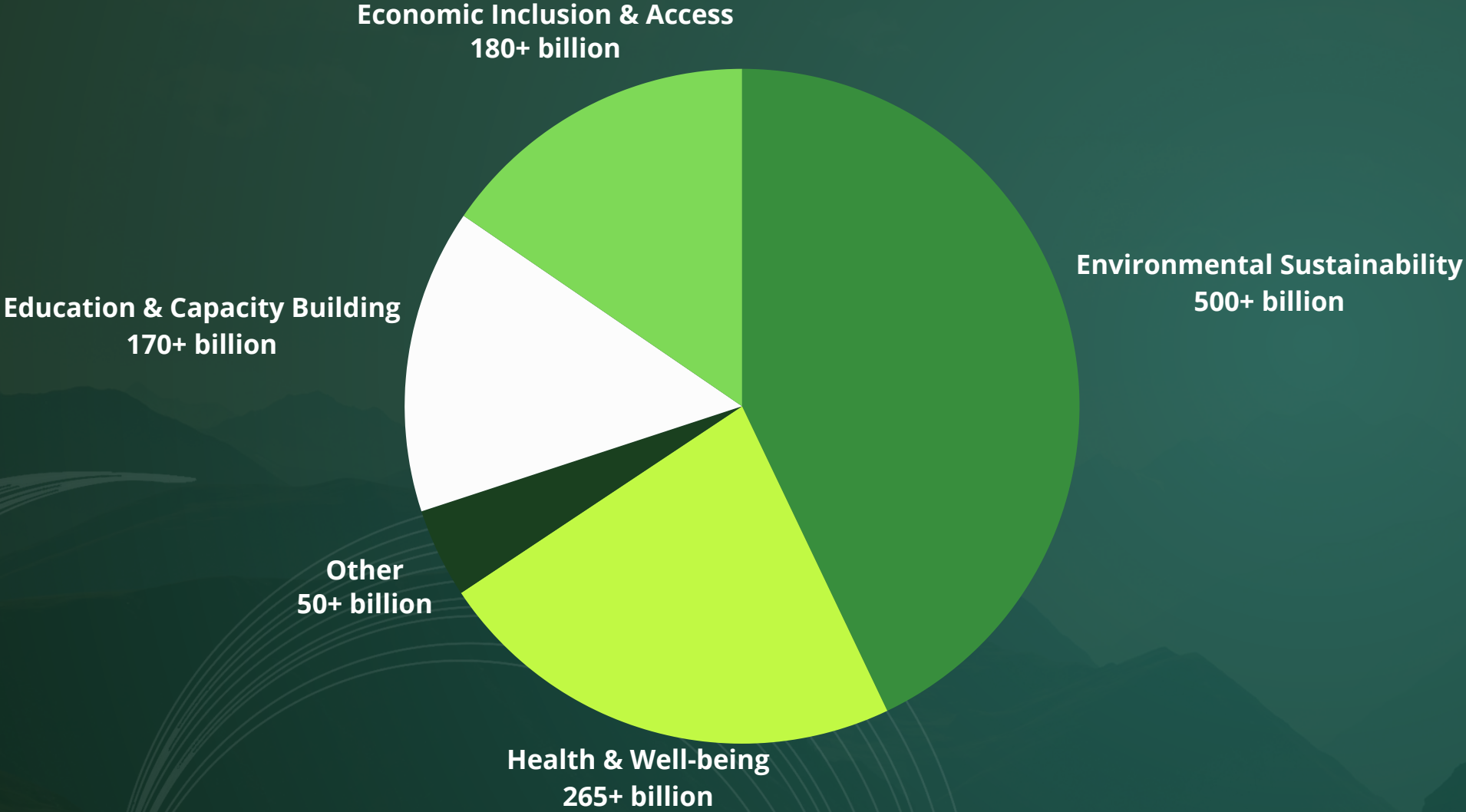
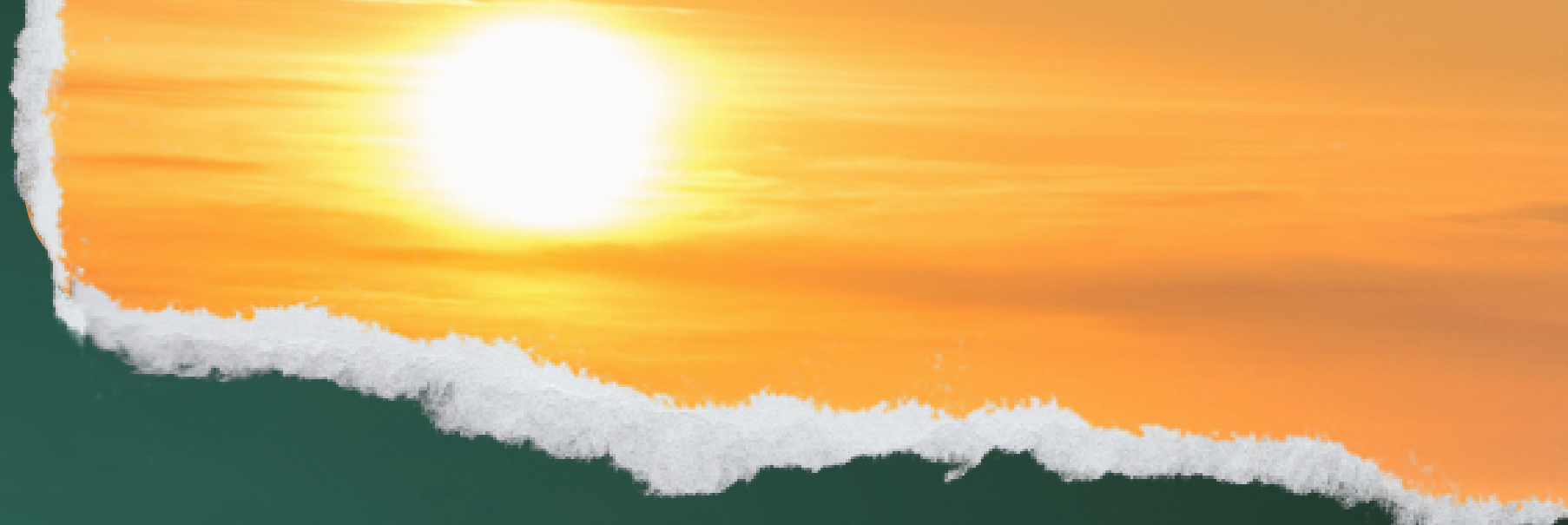
Impact Investment is such a development, arising from contemporary economies that increase their scope of consideration to encompass the globe.

**Impact Investment**  
Sustainability Awareness  
30 years ago



# Impact Investment broadened the consideration landscape of economy

Total value of global investments valued @ 1.164 trillion (2022), representing only 2% of global assets under management



## ReFi is the new frontier of Impact Investment

Name	Start-up date	Market Cap
CELO	06/2020	250M
Gitcoin	06/2021	62M
Maker DAO	12/2021	90M

Regenerative Finance (ReFi) is the Web3 subset of Impact Investment. It is poised for significant growth, reflecting the increased global awareness of the need for Web3 solutions in the field of sustainability, environmental regeneration & innovative financial solutions.

*"I regard both DeFi and ReFi as change agents moulding humanity's destiny" - Balaji*

*"The Next Step in the Evolution of Web3: Regenerative Finance" - coindesk.com*

# What is ReFi?

ReFi refers to Regenerative Finance. It is an evolution of Impact Investment that focuses on self-sustaining systemic change using Web3.

## Impact Investment

Investment choice making is primarily based on return on investment with an added Impact lens.

High due-diligence costs: Evaluating potential impact of an opportunity is time-consuming and expensive, and can sometimes result in "impact-washing".

Impact Investments can be less liquid, making them harder to exit.

Financing is set by small centralized groups, often involving private middlemen (i.e. banks or digital payments platforms).

Impact Investment opportunities are available primarily to institutional or accredited investors.

Focus is on creating a measurable positive impact, alongside a financial return.

## ReFi

### IMPACT

Main focus is to create sustainable systems that regenerate over time. Financial returns are byproducts, not central.

### TRANSPARENCY & TRUST

Blockchain's inherent transparency means all transactions are publicly verifiable. Smart contracts can be set up to automatically allocate funds based on predefined criteria.

### LIQUIDITY

ReFi allows for public liquidity, and investors/ token holders can exit within predefined requirements of the smart contract, giving them greater control over their funds.

### EFFICIENCY

ReFi directly connects people with services and replaces middlemen with decentralized software applications built with smart contracts.

### ACCESSIBILITY

Individuals with small amounts to invest can participate directly, provided they have an understanding of the technology. ReFi is, therefore, globally accessible.

### GOAL

Emphasis on creating self-sustaining, regenerative systems. Creating systems that reward long-term holding and community participation as well as systems that "give back" to their user base and the environment.

ReFi today is both the leading edge of Impact Investment and has challenges that need to be overcome:

**Siloed:**

Current ReFi focuses predominantly on carbon emissions, lacking a comprehensive approach to systems change.

**Technical:**

ReFi tends to exclude non-digital natives from innovative web3-based ecological initiatives.

**Emphasize global over local:**

There is still an absence of effective bioregional strategies for systems change in the ReFi space.





SANE enables evolution and innovation in the ReFi space through a whole-systems approach.

**Comprehensive:**

Not solely focused on carbon. Instead, full-stack Biodiversity & Human Health Indexes enable a whole-systems, holistic approach.

**Inclusive:**

Welcoming diverse communities and individuals unfamiliar with digital technologies through the use of mutual credit systems.

**Empowering:**

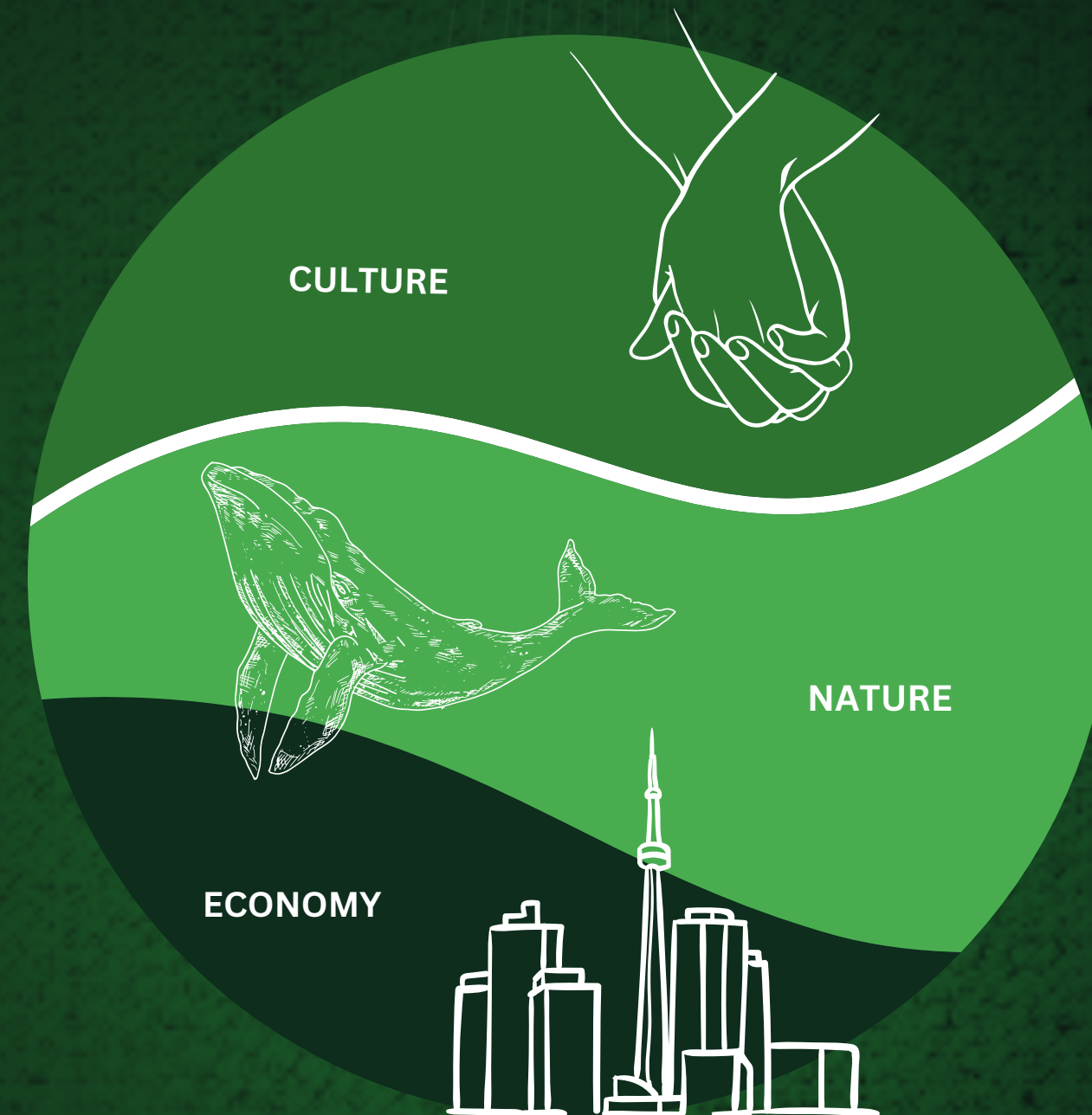
Piloting at the bioregional scale. Providing local communities with a global support network to create a web of resilient bioregions through connected decentralization. Replicating and scaling from there.





# Piloting a Network State of Resilient Bioregions

Based on the pillars of Nature, Culture and Economy, SANE is piloting bioregional-scale solutions to global problems, combining Web3 Infrastructure with the Web of Life.



SANE understands Economy as a conversation between Nature and Culture.



# SANE APPLICATION

## Whole-System Solution for Bioregional Resiliency

### ENVISION

Bioregional Stakeholders' Involvement  
Enter into Partnerships  
Identify Future Desired Conditions  
Collect Current Data Sets

### PILOT

Proposal Creation  
C-HAO Approval (DAO)  
Token Assignment

### COLLABORATE

Capacity Building of Local Organization  
Complete Approved Projects  
Onboard Local Population at Scale

### COMMUNICATE

Decentralized Social Media  
Encrypted Messenger  
Private Group Channels

### TRADE

Mutual Credit System  
Automatic Swaps  
Bioregional Economy

### EVALUATE

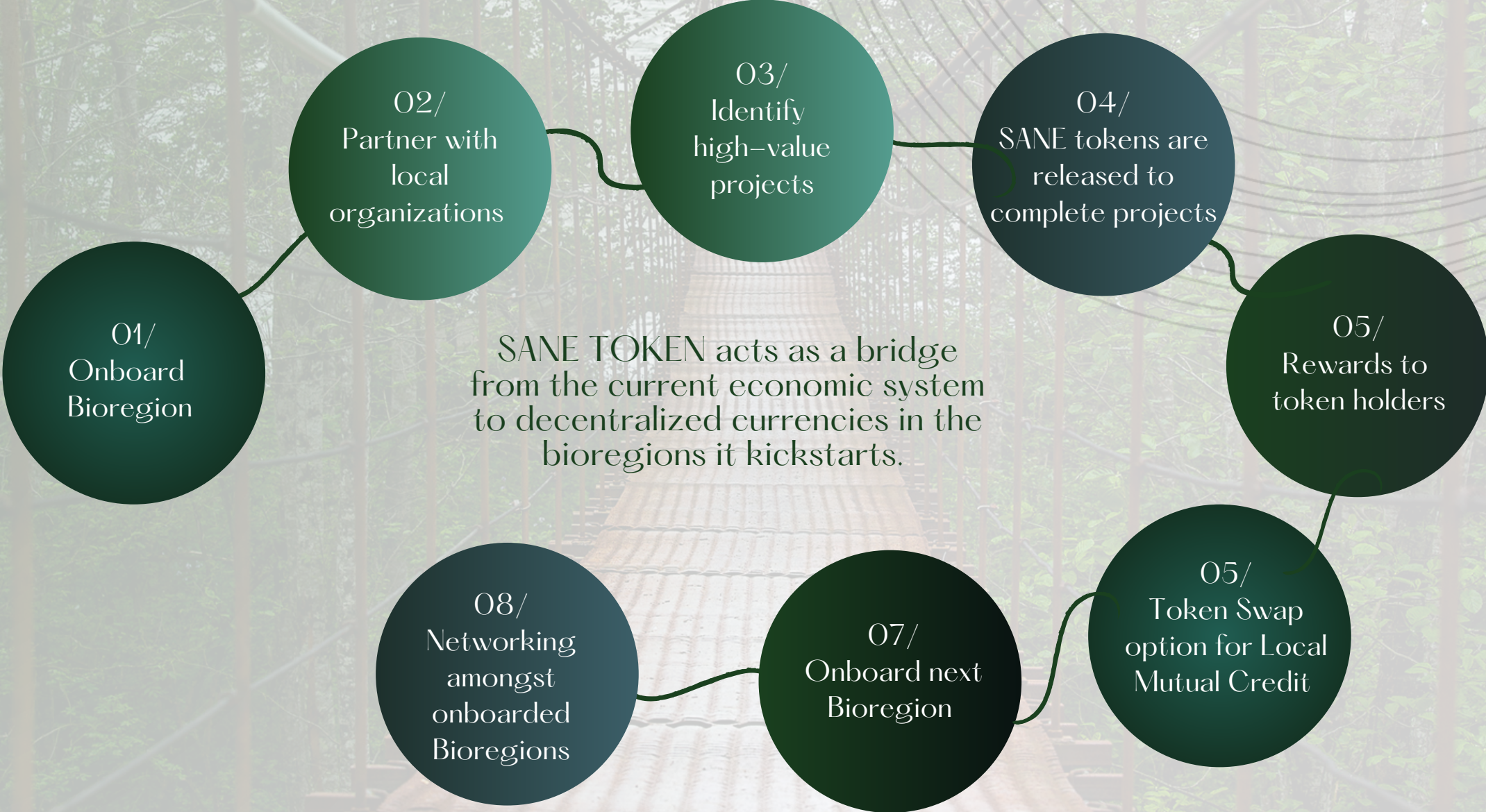
Completion Reports  
Improve Algorithm  
Incentivize Plug-ins  
Rewards System

### GOVERN

Bioregional C-HAO (DAO)  
Gasless Voting  
Programmable Neurons  
Local Organization



# SANE Flywheel Effect:



# SANE STRATEGY

## **FOCUSED**

Succeed with concentrated energy in initial bioregions, then scale and replicate. Focus Local to go Global.

## **PARTNERED**

Collaborate with successful and respected local organizations for system deployment.

## **GROUNDLED**

Use on-the-ground projects to drive bioregional citizenship and onboarding.

## **COLLABORATIVE**

Engaging with local communities and global partnerships.

## **SOVEREIGN**

Beginning in regions where a Special Economic Zone are an actual possibility.

## **MAGNETIC**

Choosing bioregions that have historically been innovative and/or are currently well-positioned to attract interest.

## **NETWORKED**

Creating a SANE Virtual Network State of Citizens to support the creation of SANE bioregions.



SANE Citizens (token holders) can propose new bioregions, vote on projects, and network with other change makers.

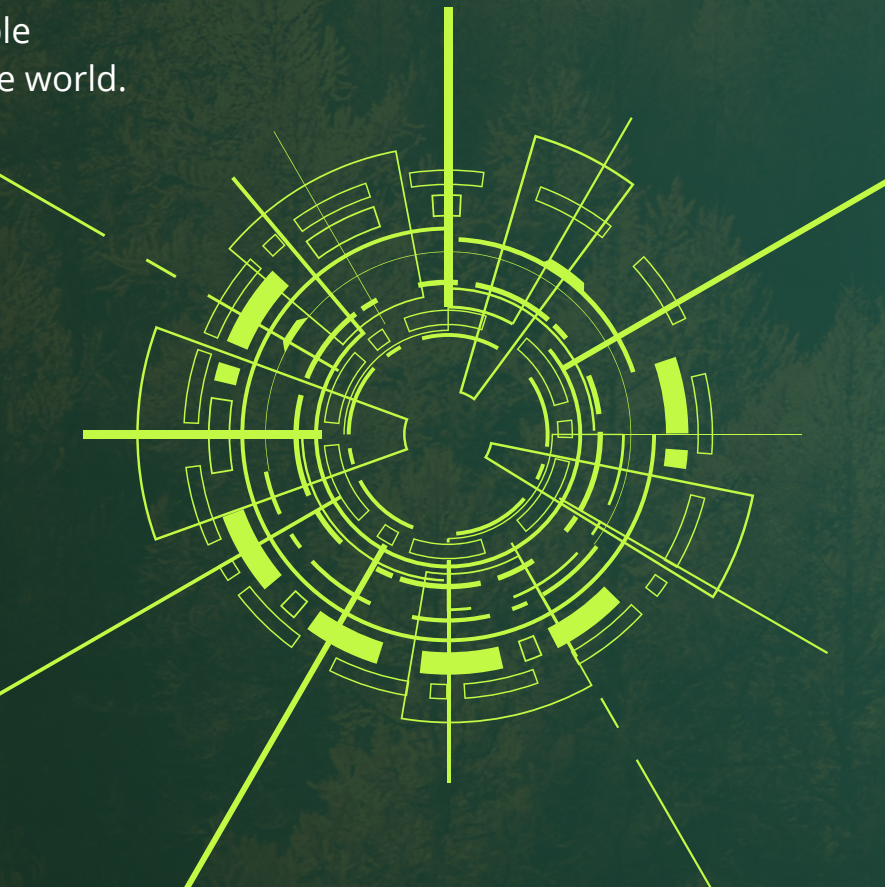
Participate in the **creation and stewardship of bioregions** working to create verifiable regenerative impact in the world.

**Propose regenerative actions** in the form of blockchain-based proposals and **vote on them**.

SANE Citizens also receive **access to a private members app**.

**Visit SANE bioregions** and explore residency.

**Swap tokens automatically for local mutual credits.**



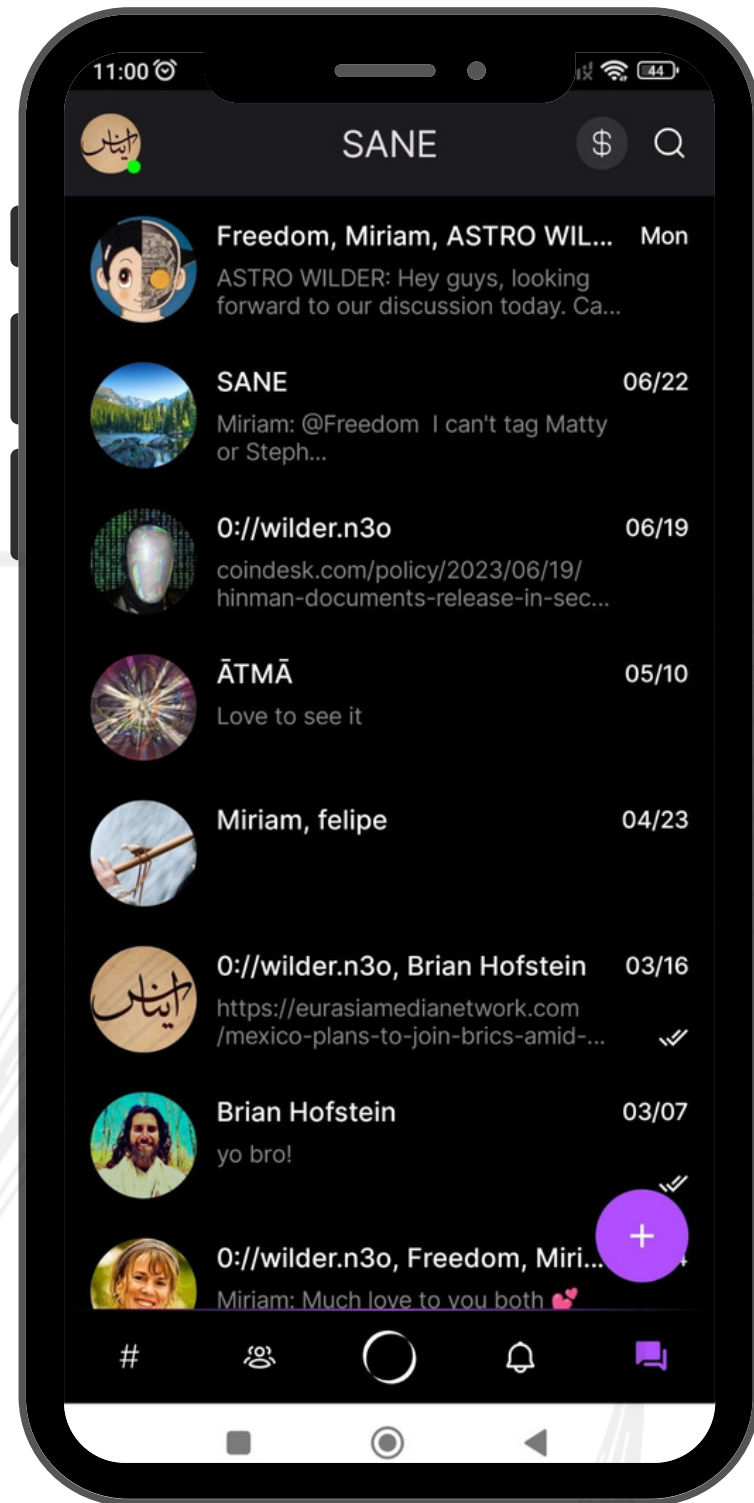
**Onboard their bioregions,** connect with fellow stewards and engage in private community events.

**Get rewarded** for every completion of regenerative action on the ground.

Altogether, by becoming a SANE citizen and stakeholder, you can actively contribute to the realization of the saner world we believe is possible and necessary!

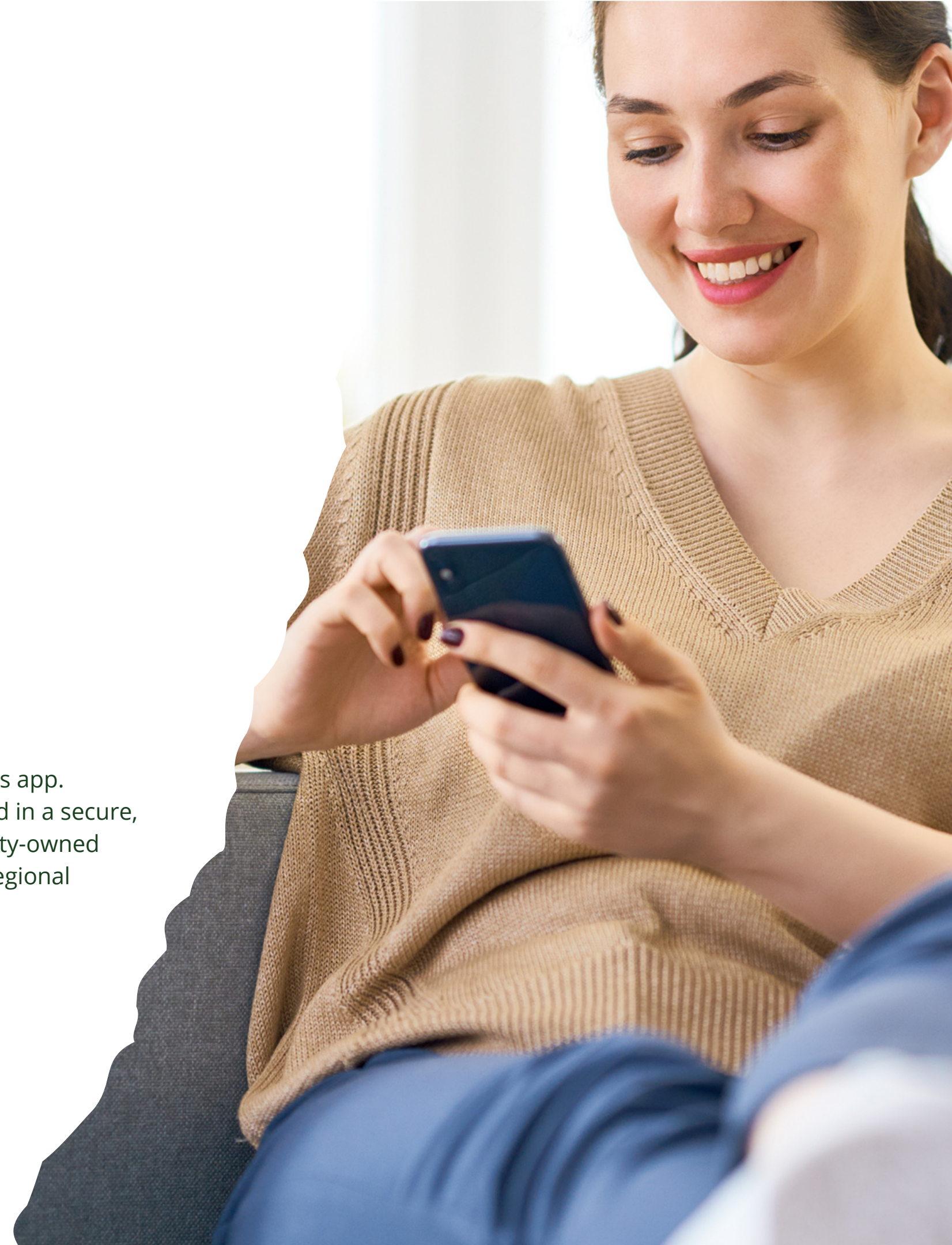


# SANE Citizens App



- Web3
- secure
- decentralized
- censorship-resistant
- community-owned

SANE Citizens receive access to a private members app. This App connects SANE Citizens around the world in a secure, decentralized, censorship-resistant and community-owned protocol, encouraging bioregional and cross-bioregional exchange and conversation.



# NUNA: A new algorithm

- A voice for earth
- A voice for human wellness
- Built for bioregions to thrive, with feedback loops from the biosphere
- Assigns value to proposals
- Measures real impact
- Harnesses data and incentivizes plug-ins
- Encourages community participation
- Integrates with Web3 technology for transparent operations
- Adapts to the unique needs and goals of each bioregion
- Open source
- Builds incentive structures for regeneration



## Token Economy:

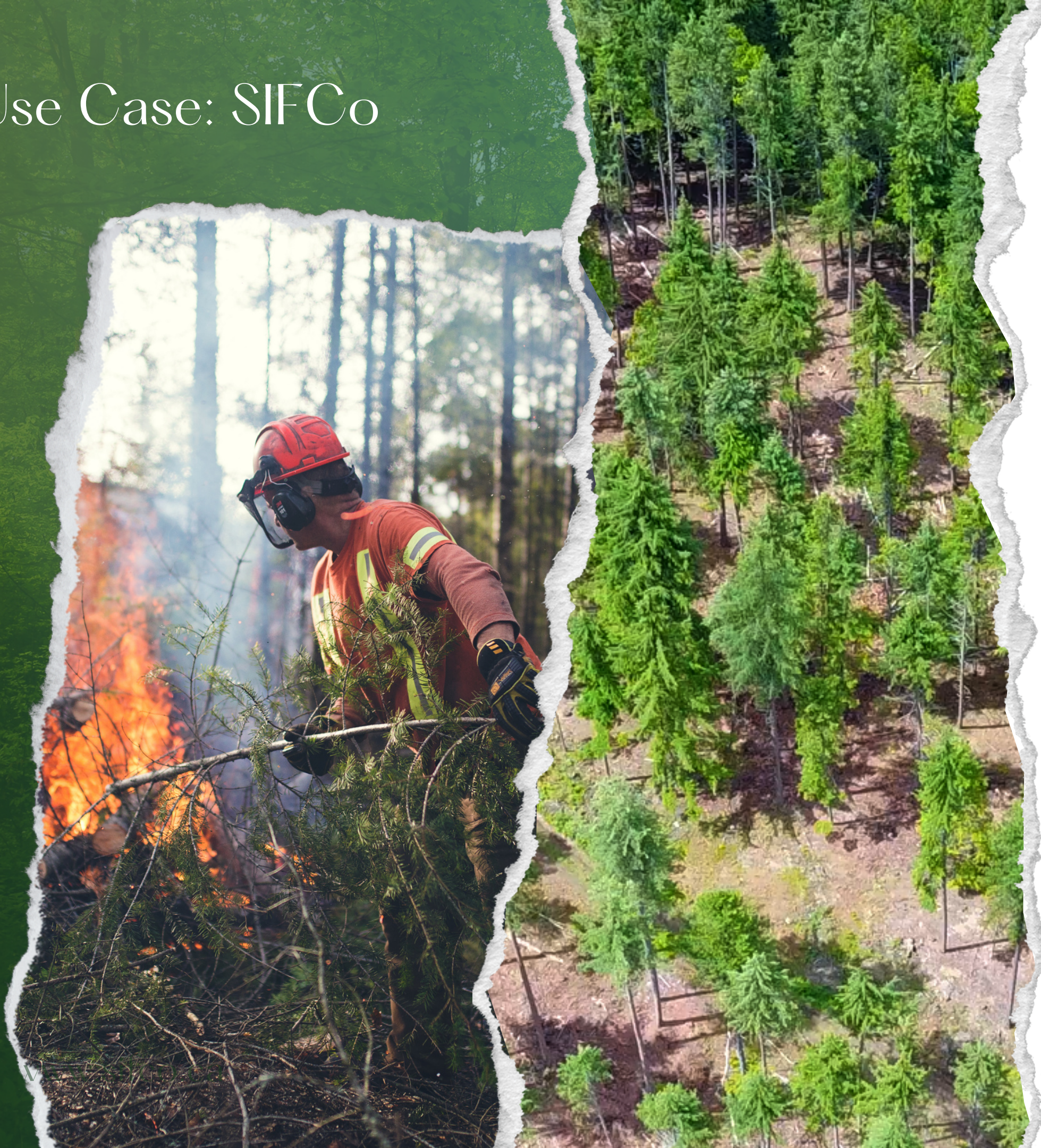
- **\$SANE** is required in order to become a SANE Citizen and to vote on project proposals
- **\$SANE** acts as a bridge to kickstart bioregional projects on the ground
- **\$SANE** can automatically be swapped for bioregional Mutual Credits. Swapped tokens are burned.

## Value Generation:

- Every SANE citizen must stake **\$SANE** to acquire citizenship
- Every citizen of the SANE Network is required to hold at least 100 **\$SANE**
- **\$SANE** holders who are citizens are rewarded for every completed project on the ground. A % of the total value of each completed project is returned to holders in the form of **\$SANE**.



# Use Case: SIFCo



## CHALLENGE

Residents wanted to unite a divided community and become stewards of their local forest ecosystem, moving management from an extractive mindset to an ecosystem-based approach.

## SOLUTION

SIFCo utilized the SANE Approach to:

- Imagine desired future conditions, and build collective agreements and incentives to get there
- Implement a multi-stakeholder approach
- Foresee & address future challenges, such as climate change and wildfires
- Build a predictive algorithm for wildfire management
- Create a landscape-level adaptation strategy on over 36000 acres. Implementation on over 2800 acres to date.
- Onboard 99% of population of an entire bioregion
- Pilot solutions to regenerative forestry that are scalable and replicable

### NOW:

- 36000 acres under management
- From deeply divided community to unified vision & strategy
- Spearheading climate change adaptation & wildfire mitigation in Canada
- Ongoing ecosystem-based management & enhancement
- Species adaptation & habitat restoration



# Use Case: Amazon Rainforest – Shuar Nation

## CHALLENGE

An indigenous people, stewards of **over 2,000,000 acres of Amazon Rainforest**, whose culture and territory are challenged by an extractive economy.

## SOLUTION

SANE is working with the Shuar Nation to:

- Pilot a regenerative economy at scale
- Support their formation of Nationhood and creation of a Special Economic Zone
- Create frameworks for agreements with multiple stakeholders
- Help with the creation of grassroots organizations and their training in Web3 to act as bridges between the Shuar Nation and SANE
- Empower and incentivize the future they envision for themselves
- Activate real impact projects on the ground
- Increase local capacity to gather data and to build systems that measure and enhance human wellness & ecosystem health



# We are ready for liftoff. SANE momentum.



Two million acres of Amazon Rainforest



Agreement with the Shuar Nation



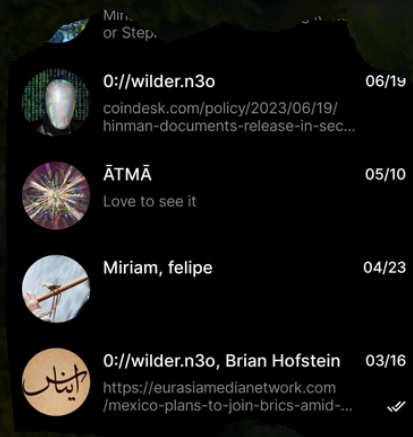
36000 acres of Temperate Rainforest



Resiliency Center



Partnership with SIFCo



SANE App



NUNA Algorithm



Ecovillage Retreat Centers

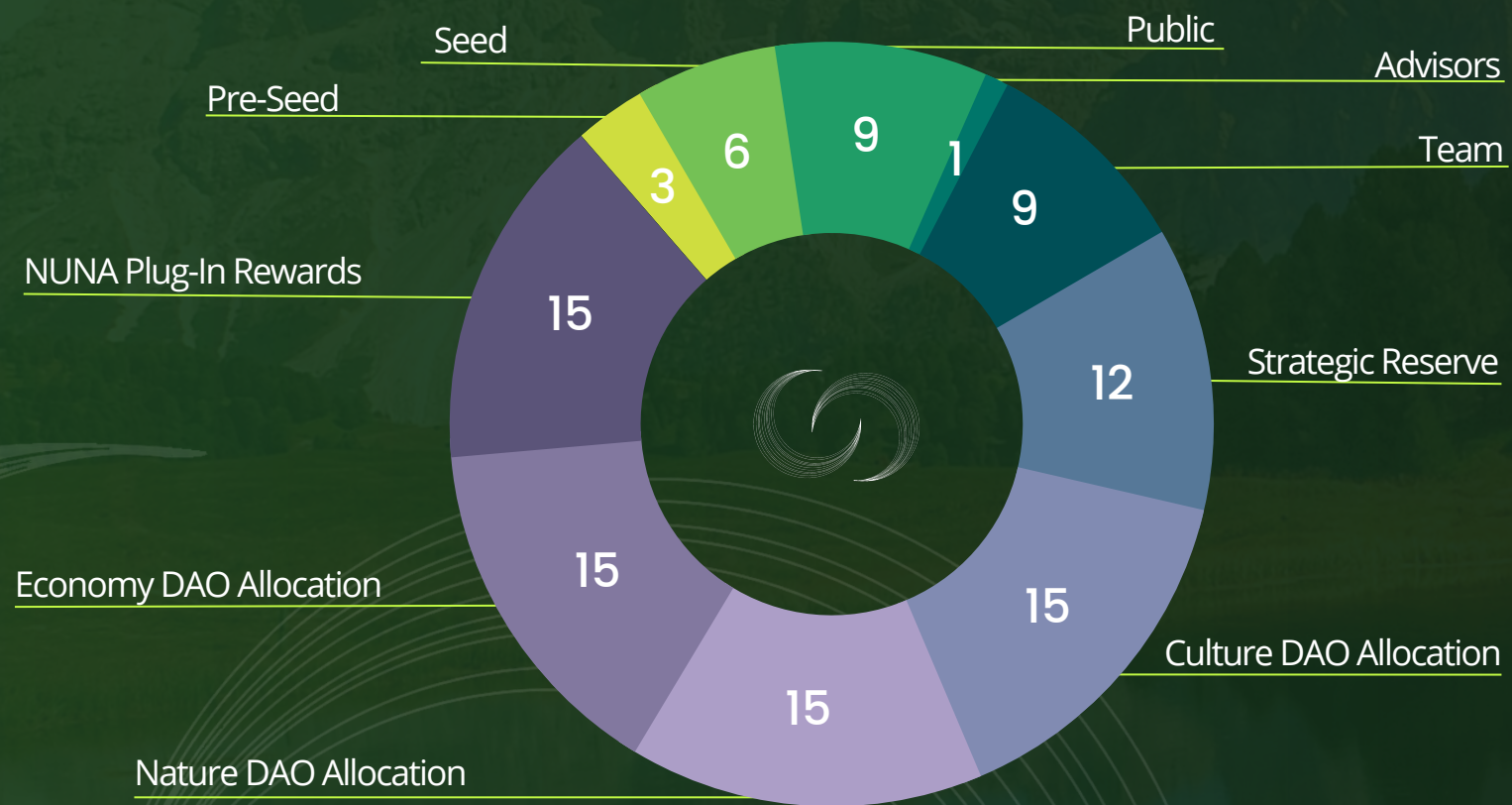


Zer0 partnership for tech backbone



Regenerative Farms

# \$SANE Tokenomics



Category	Token %	# of Tokens	Vesting Schedule
Pre-Seed	3%	110 811 790	12 month lock - then one year unlock
Seed	6%	221 622 580	24-month lock - then one year unlock
Public	9%	332 432 370	100% unlocked
Team	9%	332 432 370	24-month lock - then two years unlock
Advisors	1%	36 936 930	24-month lock - then two years unlock
Strategic Reserve	12%	443 243 160	18-month lock - then one year unlock
NUNA Incentives	12%	443 243 160	3-month lock - then two years unlock
Holding Rewards	12%	443 243 160	100% unlocked
DAOs' Projects Allocation	36%	1 329 729 948	3-month lock - then three years unlock
<b>Total</b>	<b>100%</b>	<b>3 693 693 000</b>	

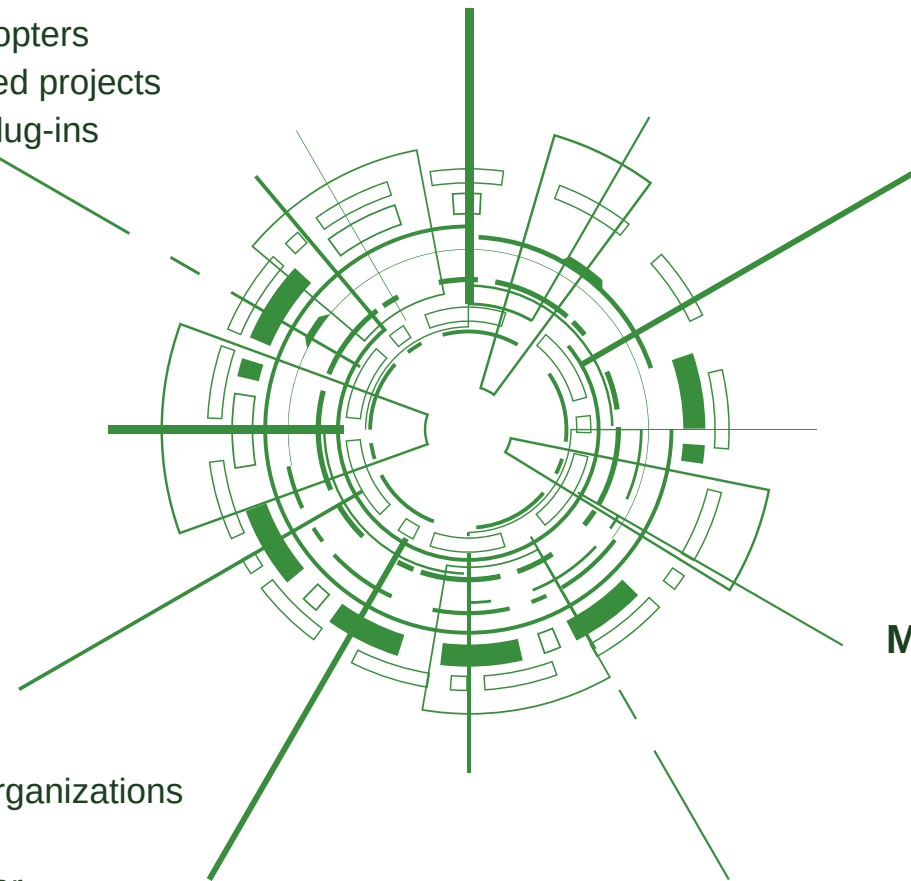
# Go to Market Strategy

## Token Incentives

- Rewards for early adopters
- Rewards for completed projects
- Rewards for NUNA plug-ins

## SANE App

- Community-driven project submission & voting
- Real-time tracking of project impact



## Marketing initiatives

- Awareness campaigns on social media
- Hosting webinars and informational sessions to educate the public about SANE's mission & projects

## Partnerships

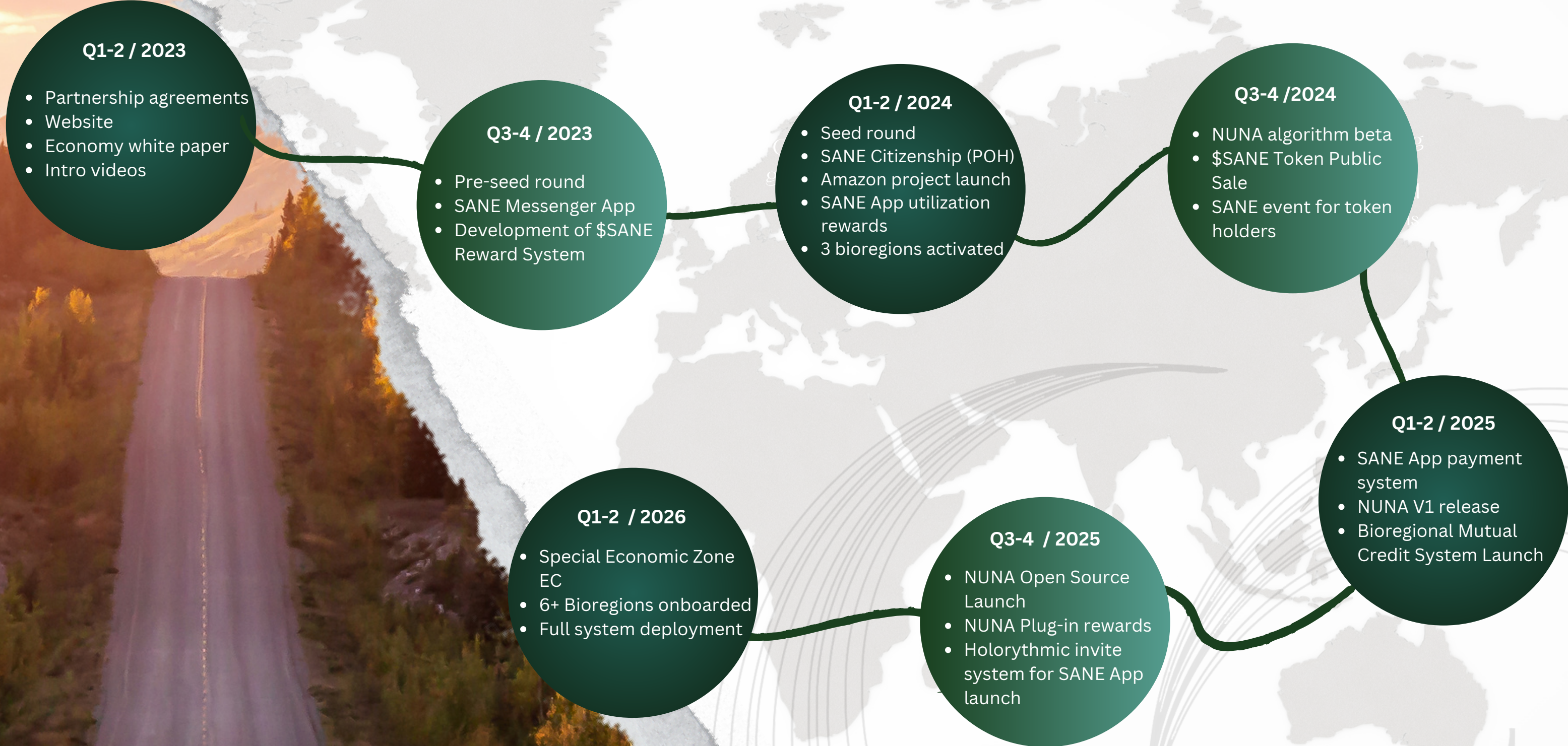
- Allied with innovative organizations to amplify our impact
- Joint endeavors to foster sustainable, community-centric solutions



# SANE is the first all-in-one, whole-systems approach to ReFi

	<b>SANE</b>	CELO	REGEN NETWORK	COMMONS STACK	DIGITAL GAIA	REFI DAO
WHOLE-SYSTEM SOLUTION	●					
BIOREGIONAL STEWARDSHIP	●		●	●		
CRYPTO-NATIVE ID (Citizenship)	●	●				
NETWORK OF COMMUNITIES	●		●			●
APPLIED RESEARCH	●		●	●	●	
REGENERATIVE ECONOMICS	●	●			●	●

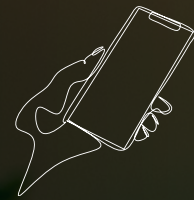
# SANE 2023 – 2026 ROADMAP





# SANE TEAMS

SANE operates as a full-stack engine for systemic change.



## App

secure, decentralized, censorship-resistant, and community-owned protocol



## Platform

Web3 community platform to network among bioregions



## NUNA Feedback

Algorithmic feedback loop from the Biosphere to measure actual impact



## Proposals

Community-generated proposals of desired future conditions



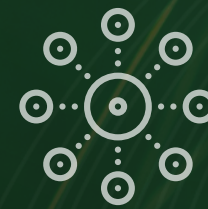
## Active in 3 Bioregions

From the Interior Temperate Rainforest of Canada to the Amazonian Rainforest



## Reward System

Token holders rewarded for each completed project



## C-HAOs

Collective Holonic Adaptive Organizations to facilitate decentralized decision making with discernment: the New DAOs



## Smart Contracts

Accountability and follow-through



Let's build the future together!

[sanefuture.io](https://sanefuture.io)

[connect@sanefuture.io](mailto:connect@sanefuture.io)