

SANE

The word "SANE" is written in a white, serif font. Behind the letters are several thin, dark blue lines that form a circular, swirling pattern, resembling a stylized sun or a globe.

Sustainable All-considerate Numinous Evolutionary

sanefuture.io



Meta-Systemic Solutions to a World in Transformation

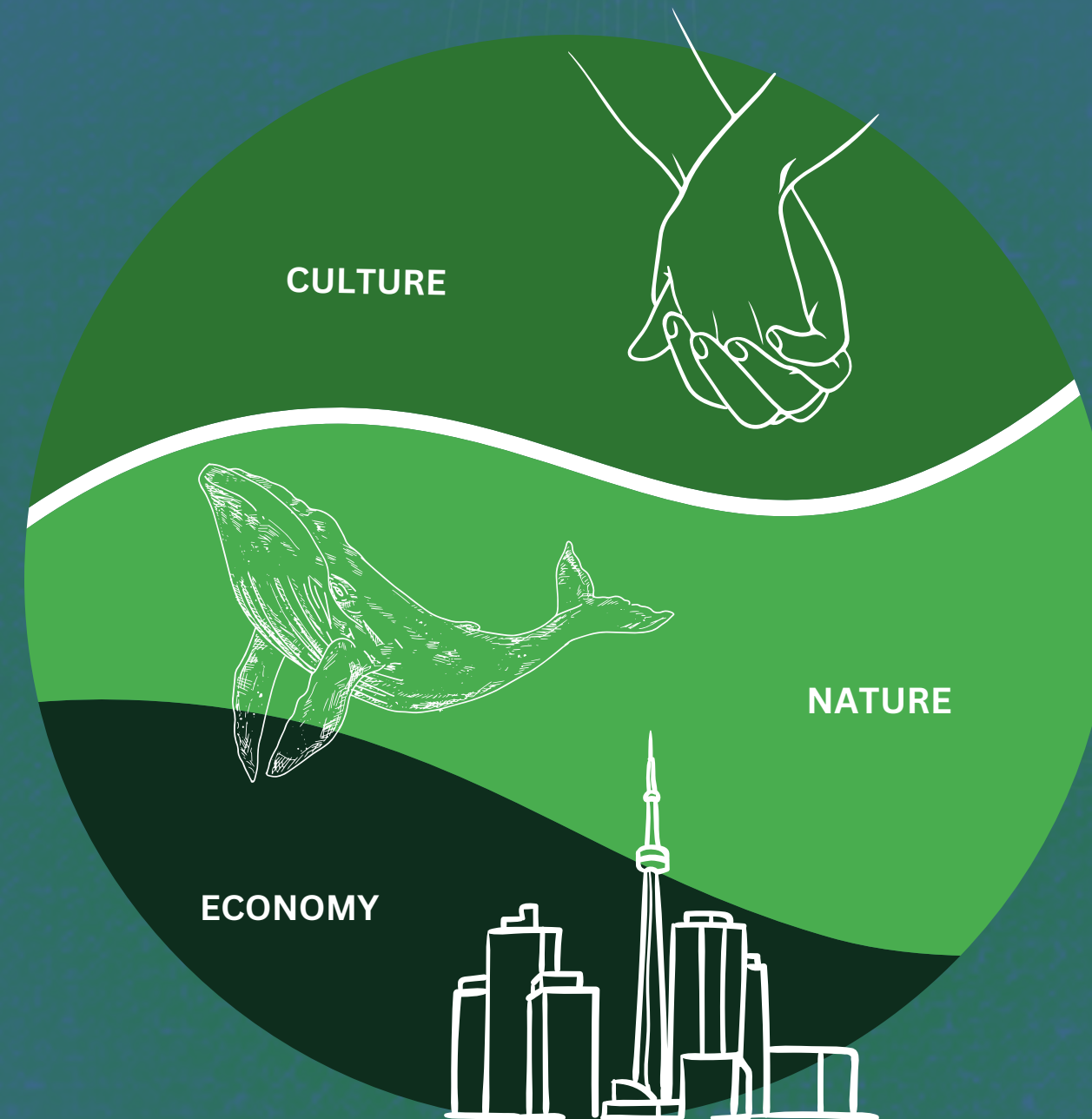
03	Overview	14	Road Map
04	Context	15	Technology
07	Regenerative Economy	18	Advantages
08	Strategy	19	Funding Opportunity
10	Locations	22	Partners
12	Case Study	23	Team
13	Next Step		





Laying the Foundations for a Regenerative Future

SANE empowers communities to achieve bioregional sovereignty and resilience, fostering ecosystem health and human wellness through the creation of a new regenerative economic system. Our initiative champions a future where local stewardship (globally connected through decentralized networks) and ecological integrity converge, creating a tapestry of thriving, sustainable communities.



This approach weaves together the strengths of Nature, Culture, and Economy, setting the stage for a world where regenerative practices and prosperity go hand in hand.



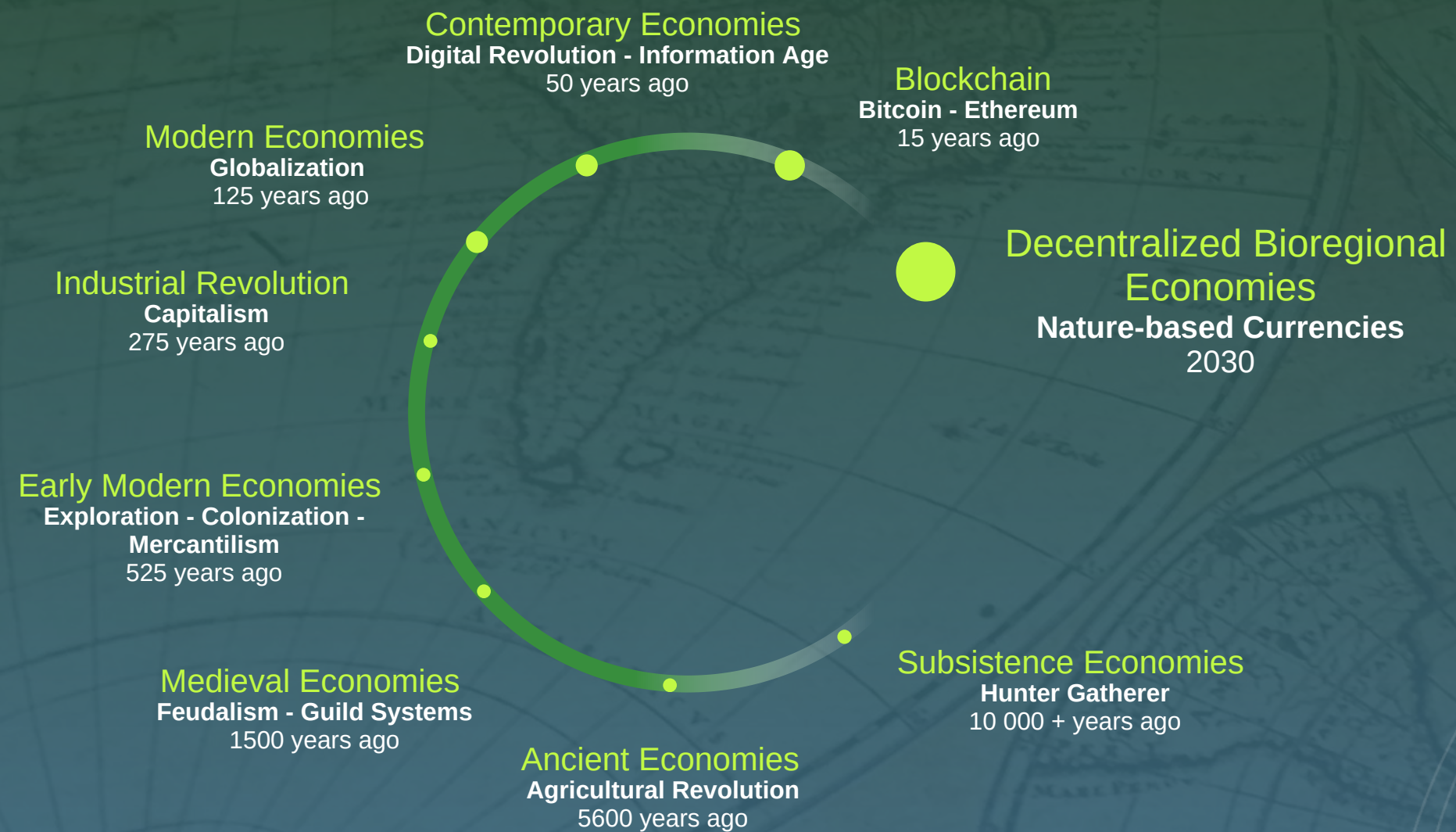
The Big Picture.

Our current meta-crisis requires meta-systemic solutions.

- With systemic challenges increasing, there is an urgent need to pilot new systems that can scale and replicate, both virtually and physically.
- One of the most foundational human systems is our economic system. Together with culture and nature, it underlies all other systems.
- Our current economic system does not assign value to natural capital assets; its embedded growth obligations are incompatible with planetary boundaries.
- The incentive structures of our current economic frame are ultimately self-terminating.
- SANE is a comprehensive system, combining virtual and physical networks with an innovative economic model to forge a path towards a harmonious human-nature interface. Our goal is to restore balance to the Earth's ecosystems, while enhancing the well-being of human societies.



Economy underlies Societal Transformation – What is the Next Step?



Increasing Circles of Care and Compassion

As our consciousness expands, so does our circle of care and compassion, evolving from a focus on the self to embracing an all-encompassing, considerate approach towards all life:



As care and compassion broaden to encompass the Whole, they give birth to new economic dimensions where both Earth's well-being and human wellness are given a voice and valued.

We believe that the creation of such templates of regenerative economies at scale are essential for the future we know is possible to emerge.



What is a Regenerative Economy?

A Regenerative Economy prioritizes restoring and sustaining natural resources, ecological health, and social well-being.

Current Economy

Success is measured primarily by growth in GDP.

Incentives are structured around competition and short-term gains, creating a win-lose dynamic.

Economic power and accumulative wealth are concentrated and centralized in the hands of a few.

Relies on debt to fuel continued economic growth, borrowing from the future without return. Currencies are disconnected from earth resources.

Focus is primarily on maximizing profits.

Extraction and consumption of natural resources, with little to no regard for externalities.

Regenerative Economy

Growth is redefined as increase in human well-being and ecological health.

Incentives are designed to foster collaboration, long-term sustainability and collective prosperity, creating win-win dynamics.

Impact is decentralized, communities are empowered, and wealth is spread bioregionally, resulting in self-sustaining regenerative systems.

Financial system incentivizes greater ecosystem health and human wellness. It is informed by collectively desired future conditions.

Businesses aim for positive, purpose-driven environmental and social impact.

Emphasis is on restoration, conservation and adaptation.

SUCCESS

INCENTIVE STRUCTURE

IMPACT

MECHANISM

BUSINESS MODEL

RESOURCE UTILIZATION

SANE STRATEGY: Focus on the bioregional to be effective at the global scale

FOCUSED

Succeeding with concentrated energy in initial bioregions, then scale and replicate, thereby embodying our 'Local to Global' ethos.

PARTNERED

Collaborating with respected local organizations for system deployment.

GROUNDLED

Using on-the-ground projects to drive bioregional participation and onboarding.

COLLABORATIVE

Engaging with multi-stakeholders, local communities, and global partnerships.

SOVEREIGN

Beginning in regions where a Special Economic Zone is an actual possibility.

MAGNETIC

Choosing bioregions that have historically been innovative and/or are currently well-positioned to attract interest.

NETWORKED

Creating a SANE Virtual Network to support the creation of SANE bioregions.



SANE is creating technology, methodologies and bioregional-scale pilots to iterate a new regenerative economy that contributes to human wellness and ecosystem health.

Pilot projects:

Place-based, bioregional-scale examples that demonstrate the full stack of human systems, while contributing toward regenerating the planet and enabling communities to thrive.

Tools:

- Mutual Credit systems
- Algorithmic feedback mechanism from Nature
- Cryptocurrencies as a bridge to a regenerative economy
- Implementing a new form of Special Economic Zone — a Regenerative Economic Zone
- Multi-Stakeholder collaborative methodology
- Bioregional, ecosystem-based mapping
- Decentralized, censorship-resistant communication platform
- Leadership & education framework for bioregional coherence building

Islands of Sanity:

These Regenerative Economic Zones become 'nations within Nations', creating templates for global transformation.



Empowering Bioregional Resiliency.

Using 108 criteria we scoured the earth, looking for which location(s) would be most conducive to land an initial Regenerative Economic Zone (REZ) to iterate a new economy. Ecuador, with its progressive constitution recognizing the rights of nature and indigenous peoples, was found to be the ideal location for our first REZ. This REZ will serve as a global exemplar of a regenerative economic system, fostering local and international collaboration and innovation. By attracting global interest and support, it aims to integrate sustainable development practices, boost economic resilience, and set a new standard for ecological and human health.

AMAZON RAINFOREST

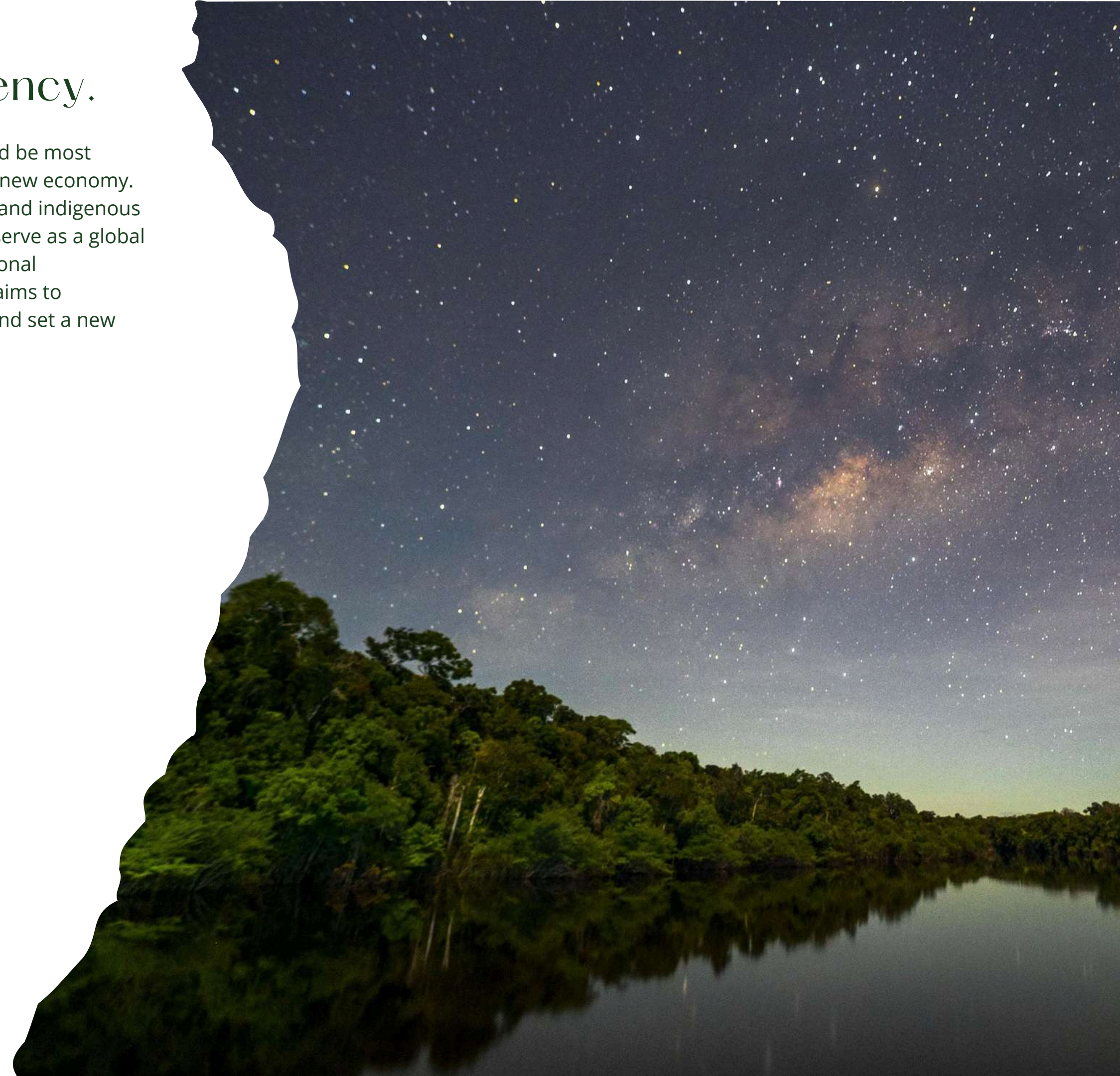
- Essential Planetary Ecosystem
- Most biodiverse area of the Amazon Rainforest is in Ecuador
- Already existing global awareness of the importance of the Amazon Rainforest

CONSTITUTION

- Rights of nature in law
- Indigenous rights are recognized
- Food sovereignty rights
- Integrative health systems recognition
- Fifth layer of government: Citizens Assembly

COLLABORATION

- Existing organizations and alliances have been built over decades
- Longstanding relationships with the Indigenous Nations
- Invitation by Indigenous leaders to implement a regenerative economy in the headwaters of the Amazon



Working at the bioregional scale. Why?

Bioregions are defined by natural geographical and ecological boundaries. They are the optimal environments for regenerative development: large enough to require a multi-layered full-stack approach, and small enough to enable hands-on, deep learning, effective adaptation, and immediate feedback loops. The bioregional scale acts as an adaptive template that can scale globally.

Network Effect:

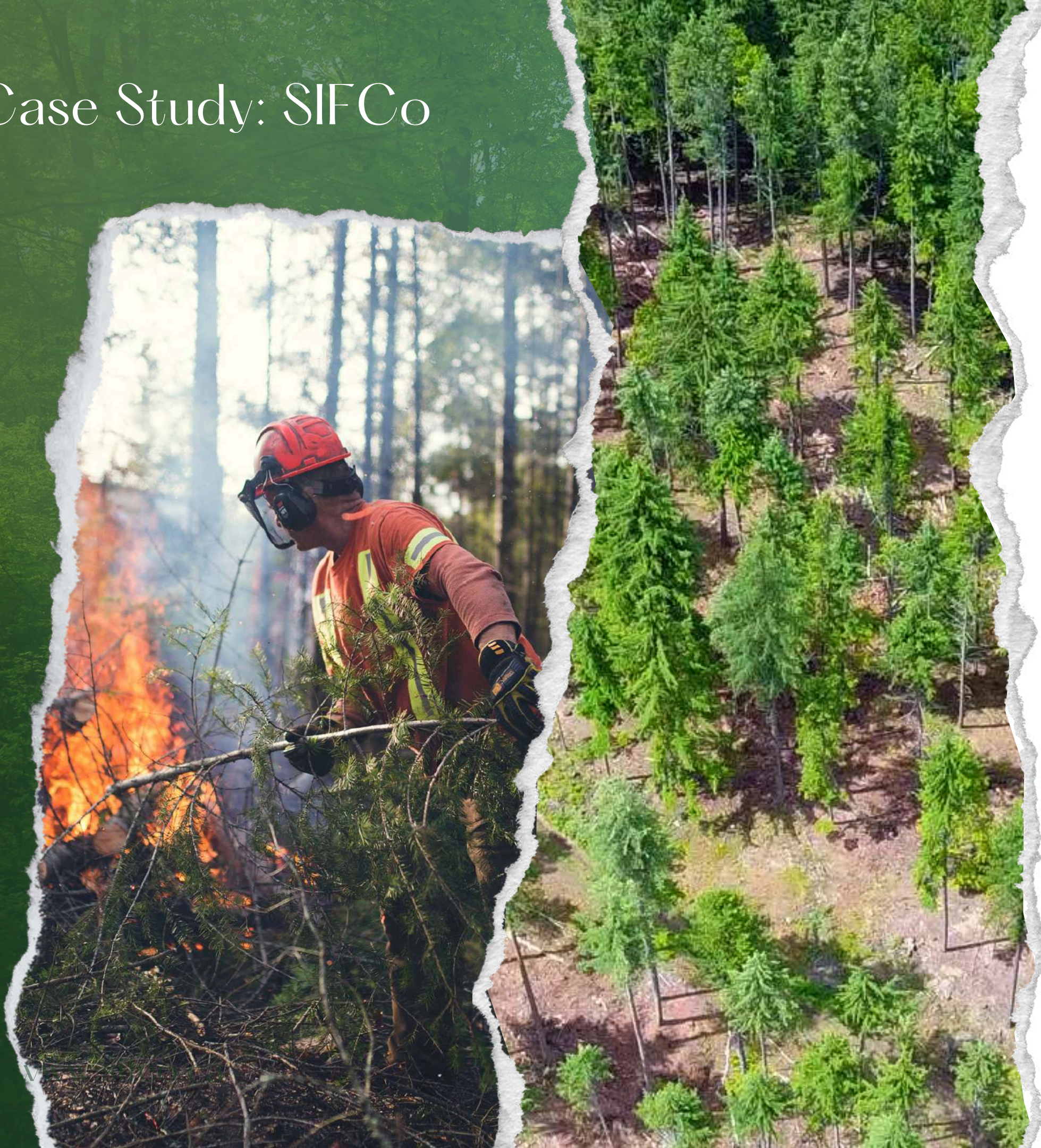
An interconnected network of bioregions will amplify local successes into planetary impact through template creation. By cohering a network of locations, we aim to enhance ecological resilience on both local and global scales, boost community-centric capabilities, and unlock unprecedented levels of cooperation and innovation.

Human-led and technologically supported:

Our strategy integrates advanced distributed technologies with deep ecological insights, forming a holistic approach that honors the nested complexity of our shared world. This synergy is set to catalyze transformative change, empowering communities to thrive sustainably, while nurturing the earth's ecosystems and biodiversity.



Case Study: SIFCo



CHALLENGE

Residents wanted to unite a divided community and become stewards of their local forest ecosystem, moving management from an extractive mindset to an ecosystem-based approach.

SOLUTION

SIFCo utilized the SANE Approach to:

- Imagine desired future conditions, and build collective agreements and incentives to get there
- Implement a multi-stakeholder approach
- Foresee & address future challenges, such as climate change and wildfires
- Build a predictive algorithm for wildfire management
- Create a landscape-level adaptation strategy on over 36000 acres. Implementation on over 2800 acres to date.
- Onboard 99% of population of an entire bioregion
- Pilot solutions to regenerative forestry that are scalable and replicable

NOW:

- 36000 acres under management
- From deeply divided community to unified vision & strategy
- Spearheading climate change adaptation & wildfire mitigation in Canada
- Ongoing ecosystem-based management & enhancement
- Species adaptation & habitat restoration



Next Step: A first Regenerative Economic Zone

CHALLENGE

Indigenous nations — stewards of millions of **acres of Amazon Rainforest** — whose culture and territory are challenged by an extractive economy.

SOLUTION

- Partner with local NGOs and representatives of 30 Indigenous Nations to form an Ecuadorian coalition supporting the idea of a REZ
- Formation of an International Coalition of funders and organizations to support large-scale pilots that can scale and replicate globally
- Seek debt-relief and other incentives, such as capital investment for Ecuador as a means to incentivize REZ creation
- Build a Mutual Credit App for grass-roots empowerment and decentralization of economic activities.
- Create frameworks and capacity building for agreements between multiple stakeholders
- Create processes for locally-based, agreed-upon, desired future conditions that become foundational to a new economic frame
- Develop new currencies that align with the rights of nature and with measurable increases in human wellness
- Activate real impact projects on the ground to kick-start bioregional economic activities
- Pilot a regenerative economy at scale, offering a new economic model for the world



SANE 2023 - 2027 ROADMAP

Q3-4 / 2023

- Partnership agreements
- Website
- Economy white paper
- Intro videos

Q1-2 / 2024

- NGO coalition
- Indigenous representative team
- Manifesto for the creation of an REZ

Q3-4 / 2024

- Mutual Credit System App V1
- Messenger App V1
- Amazon project launch
- Funding opportunity launch

Q1-2 / 2025

- Ecuador events
- International Coalition
- SANE token launch
- Meeting with Ecuadorian Government with incentive line-up

Q3-4 / 2025

- Grass-roots projects
- REZ legal
- NUNA V1 release
- SANE Mutual Credit App deployment

Q3-4 / 2026

- Regenerative Economic Zone EC (REZ)
- 6+ Bioregions onboarded
- Full system deployment

Q1-2 / 2026

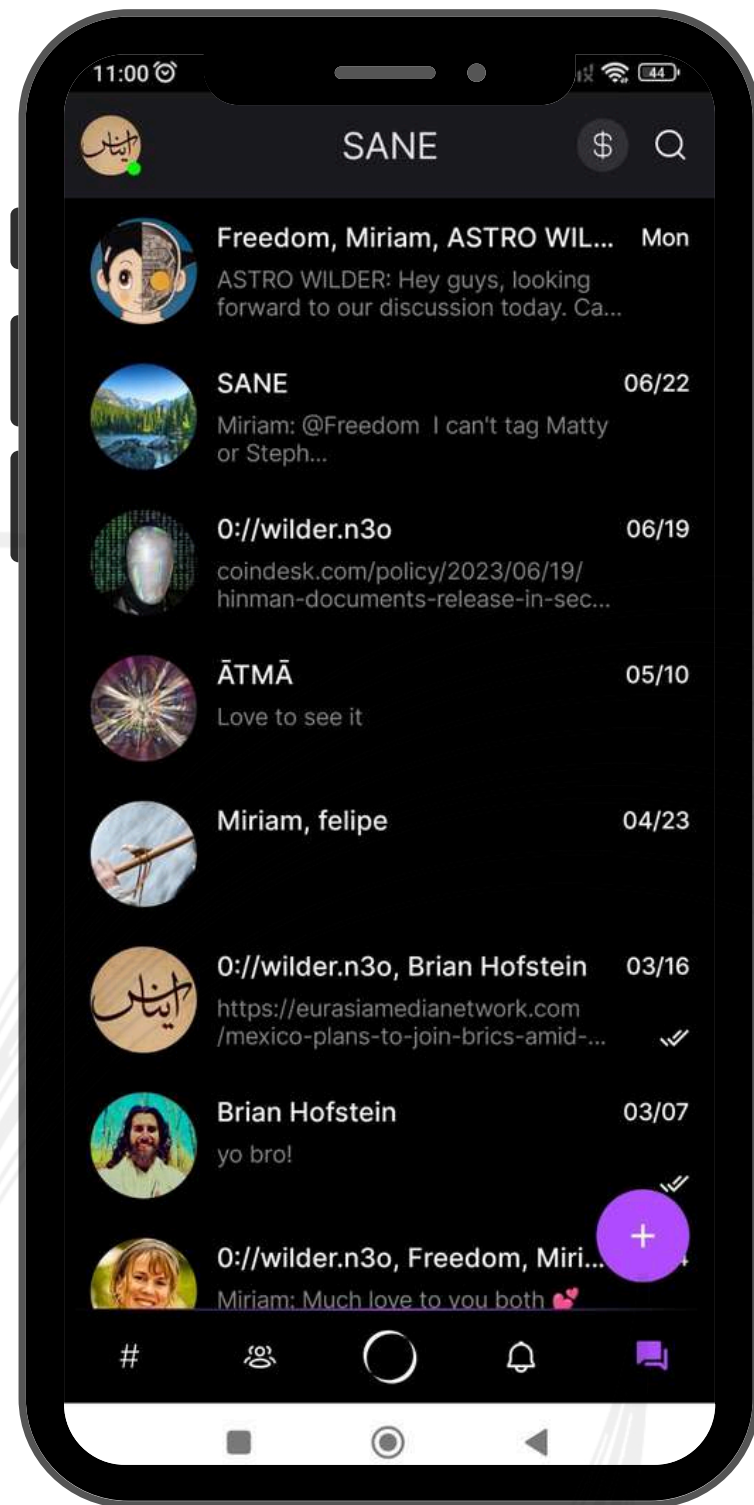
- NUNA Open Source Launch
- NUNA Plug-in rewards
- Holorythmic invite system for SANE Messenger App launch

SANE Mutual Credit App

- Facilitates local trade without traditional currency
- Enables seamless exchange within a bioregion
- Encourages sustainable economic activities
- Fosters peer-to-peer transactions
- Creates true local enterprises
- Allows support of undervalued activities within a bioregion
- Free and easy to download and use
- Resilient to inflation dynamics
- Empowers community-based projects
- Enables seamless exchange within network of participating bioregions
- Creates a network effect that fuels local creativity and bioregional resiliency
- Connects to Web3 in order to bridge from current economy to regenerative economy

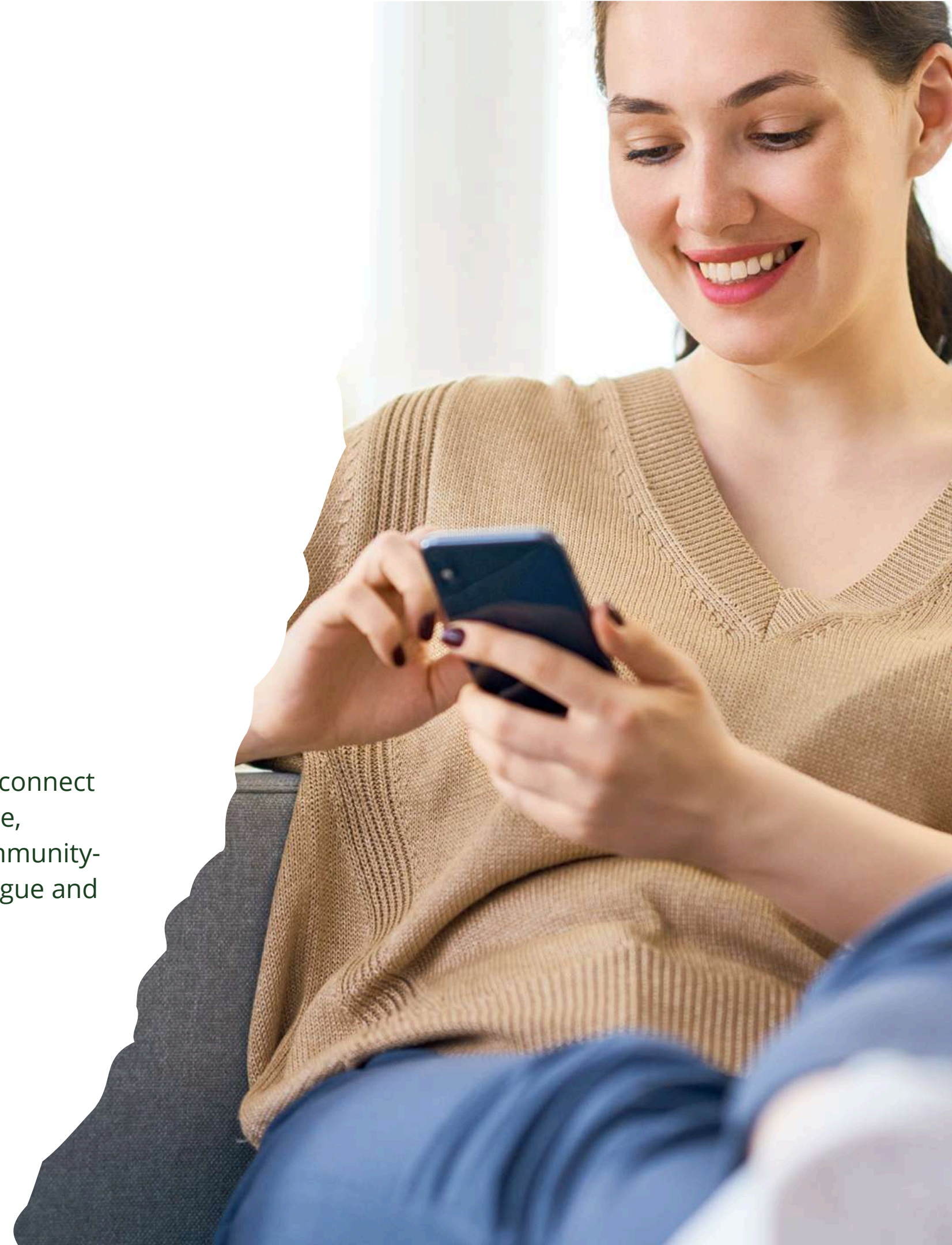


SANE Members App



- secure
- decentralized
- censorship-resistant
- community-owned
- open source

Access a private members App designed to connect SANE members globally. Experience a secure, decentralized, censorship-resistant and community-owned protocol, that champions open dialogue and collaborative exchange across bioregions.



NUNA: A new algorithm

- A voice for earth
- A voice for human wellness
- Built for bioregions to thrive, with feedback loops from the biosphere
- Assigns value to proposals
- Measures real impact
- Harnesses data and incentivizes plug-ins
- Encourages community participation
- Integrates with Web3 technology for transparent operations
- Adapts to the unique needs and goals of each bioregion
- Open source
- Builds incentive structures for regeneration

SANE change makers

Participate in the **creation and stewardship of bioregions** working to create verifiable regenerative impact in the world.

Propose regenerative actions in the form of blockchain-based proposals and **vote on them**.

Use local Mutual Credits and swap from bioregion to bioregion, encouraging a true decentralized economy.

Visit SANE bioregions and explore residency.

Onboard your bioregion, connect with fellow stewards and engage in private community events.

Bioregions receive **access to a private members app**.

Help create templates for the future that we all know is possible

Become part of a vibrant, uplifting Community, making a real difference in the world.

Altogether, as a SANE stakeholder, your active participation helps turn the vision of a saner world into reality!



The meta-crisis we are experiencing requires meta-systemic solutions, and we believe that SANE offers one such solution. We hope to develop meaningful relationships with our funders, proving clear demonstrable success year to year, all the way to full-scale impact by year 7.

Our funding goal: 101 million over the next seven years.

- **2024:** Five million
- **2025:** Seven million
- **2026:** Nine million
- **2027:** Thirteen million
- **2028:** Seventeen million
- **2029:** Twenty-one million
- **2030:** Twenty-nine million



Use of Proceeds 2024–2025

- Rapid growth of SANE team to take full advantage of our current collaborative opportunities
- Completion and launch of the SANE Mutual Credit App
- Completion and launch of the SANE Messenger App
- Establish Ecuadorian and International Coalition for REZ creation
- Engage REZ legal team
- Continued development of NUNA V1, using 15 years of data gathered by our partner SIFCo. Hire an “active inference” team to join the NUNA development team.
- Activate first collaborative on-the-ground projects in the Amazon with Indigenous Nations, envisioned and designed by them: A temple of wisdom and a central marketplace
- Fund eight full-time Indigenous leaders to build educational capacity in regenerative economy within their respective bioregions
- Continue the development of two eco-villages in the Andes of Ecuador
- Host fourth SANE Youth Consciousness Summit
- Host our first International bioregional resiliency and REZ creation summit



We are ready for liftoff. SANE momentum.



Two million acres of Amazon Rainforest



Agreement with the Shuar Nation



36000 acres of Temperate Rainforest



Resiliency Center



Partnership with SIFCo, Pachamama Alliance and ASHA



SANE Members App



SANE Mutual Credit App



Ecovillage Retreat Centers



Zer0 partnership for tech backbone



Regenerative Farms

Partners



Pachamama Alliance

With roots in the Amazon rainforest, Pachamama equips people around the world with inspiration and training to regenerate the planet's ecosystems, bring justice to their communities, and restore relationships with Earth, each other, and self.

Amazon Sacred Headwaters Alliance

An Alliance of 30 Indigenous nations in Ecuador and Peru with a shared vision to permanently protect 86 million acres of bio-culturally diverse tropical rainforests.

Takina Nuna

Cultivates ecovillage development, full-stack permaculture, and bioregional resilience in the Ecuadorian Andes.

Commons Engine

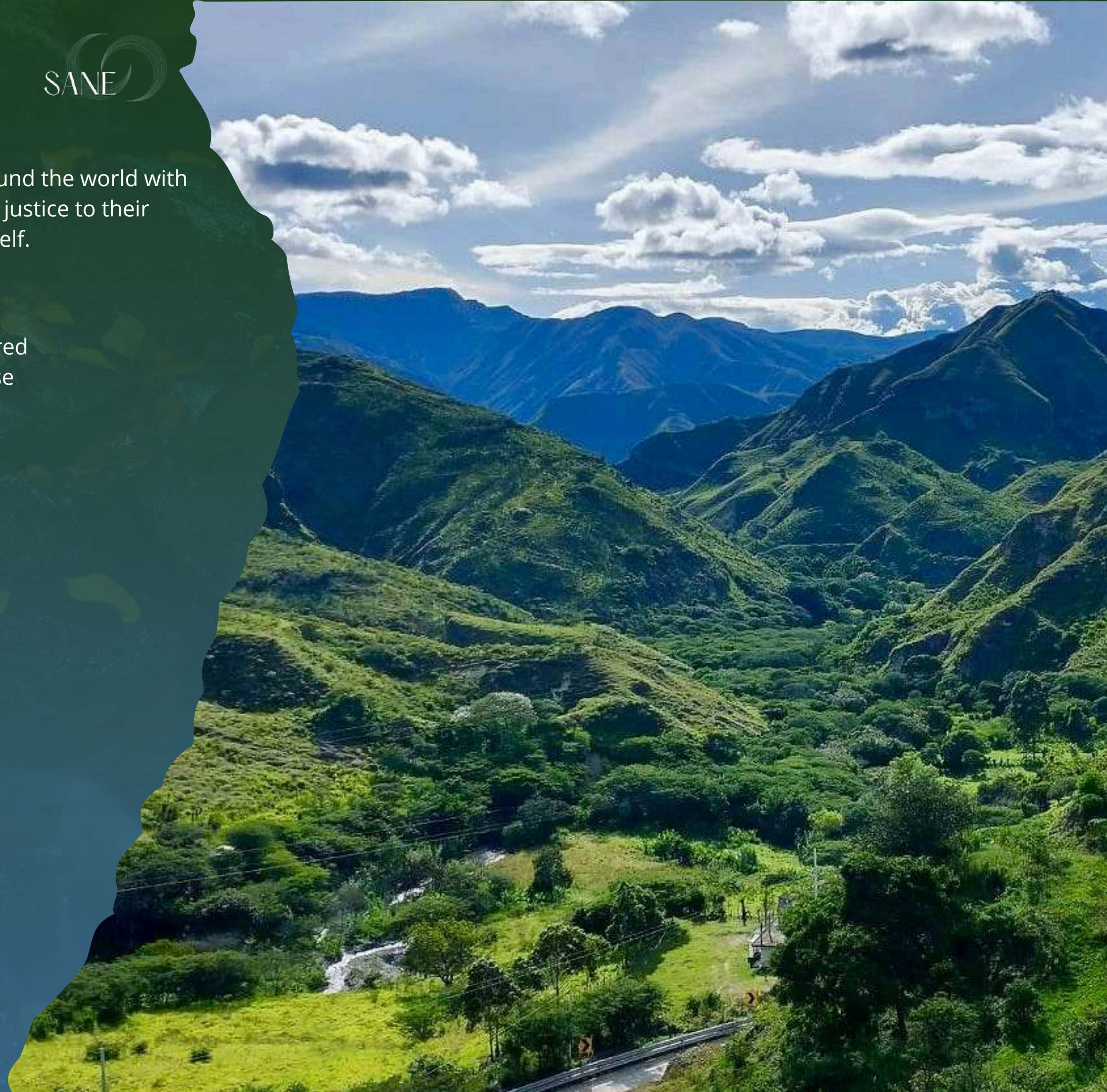
A service agency focused on designing products, services, and experiences that contribute to the regeneration of the commons.

Slocan Integral Forestry Cooperative (SIFCo)

Fosters community and ecological health in the world's only interior temperate rainforest, spearheading successful climate change adaptation strategy at bioregional scale for the past fifteen years.

Zero

A new OS that is secure, sovereign, decentralized, censorship-resistant, community-owned, and open-source, poised to redistribute the future.

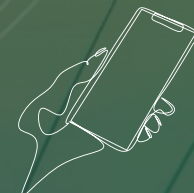


SANE TEAMS

SANE operates as a full-stack engine for systemic change with over three decades of demonstrable success.



Messenger App
secure, decentralized, censorship-resistant, and community-owned protocol



Mutual Credit App
Activating bioregional decentralized economies



NUNA Feedback
Algorithmic feedback loop from the Biosphere to measure actual impact



Community Leadership
Community-generated proposals of desired future conditions



Active in 3 Bioregions
From the Interior Temperate Rainforest of Canada to the Amazonian Rainforest



New Financial Institutions
Micro-loan organization and regenerative economic tools



Regenerative Economic Zone
Coalition building, legal team, and international relations



Smart Contracts
Accountability and follow-through

Let's build the future together!

sanefuture.io

connect@sanefuture.io